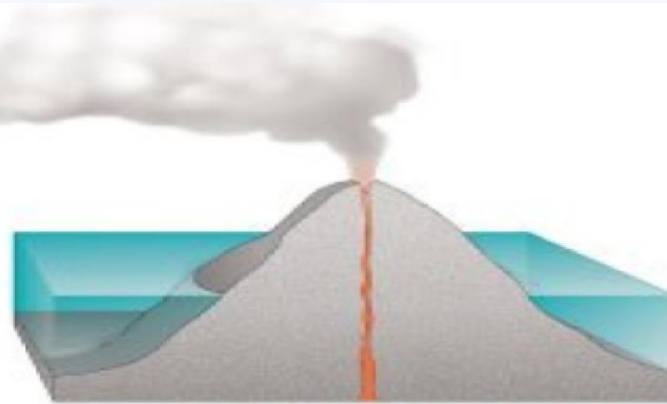


# Tetiarioa Atoll Restoration Program



Hawaii

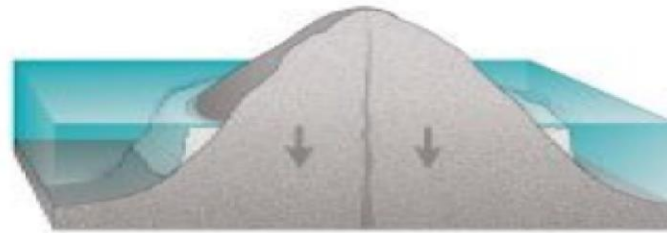


1

**Active Volcano**

No reef

Tahiti



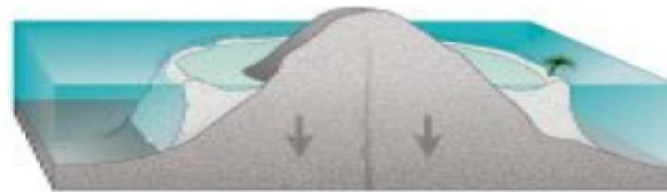
2

**Dormant Volcano**

Reef begins to grow around shore

Island erodes and subsides

Moorea  
Bora Bora



3

Reef encircles shore

Island erodes and subsides

Lagoon grows larger

Tetiaroa  
Rangiroa

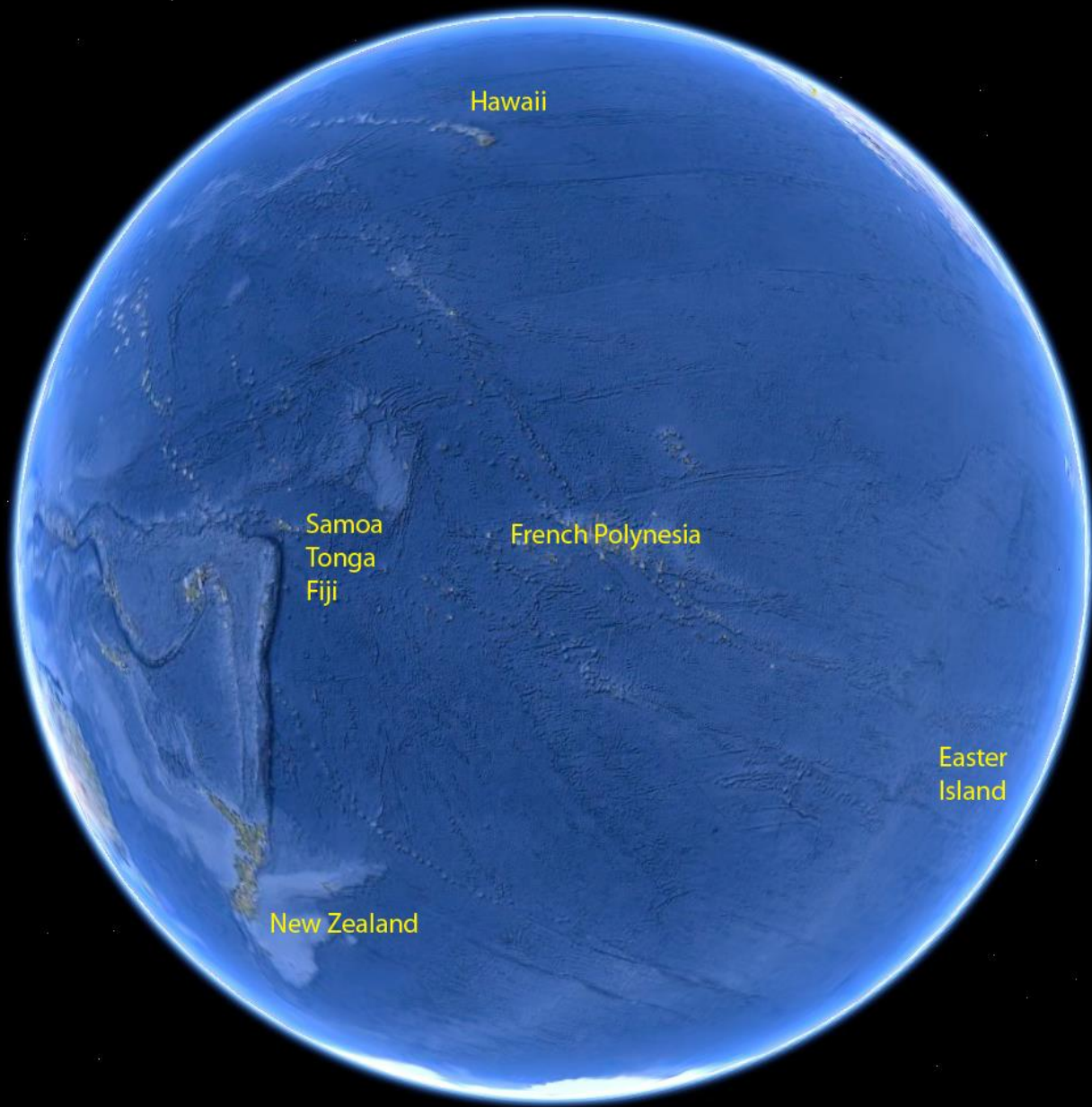


**Atoll**

Volcanic rock gone

Only motu and reef left





Hawaii

Samoa  
Tonga  
Fiji

French Polynesia

Easter  
Island

New Zealand

# Society Islands

Tetiaroa

Society Ridge

Moorea

Pape'ete

Tahiti

French Polynesia

Teahitia Seamount

Google Earth

ount

© 2018 Google

Data LDEO-Columbia, NSF, NOAA

Data SIO, NOAA, U.S. Navy, NGA, GEBCO



100 km



MOTU ONETAHI



TETIAROA ATOLL



Marlon Brando Estate



# Tetiarao Society Partners

*Sustainable Tourism*

Pacific Beachcomber



Community Elders and Teachers



## Academic/Research Partners

- UC Berkeley
- CRIOBE
- Institute Louis Malarde
- University of Washington
- University of Auckland
- University of Hawaii
- Oxford University

## NGO Partners

- Te Mana o te Moana
- SOP Manu
- Nature Conservancy
- Smithsonian Institute
- Mission Blue

# Conservation and Sustainable Use Plan

Research  
Conservation  
Education

Goals  
Restored Atoll  
MPA/Rahui





# Tetiarao Atoll Restoration Program



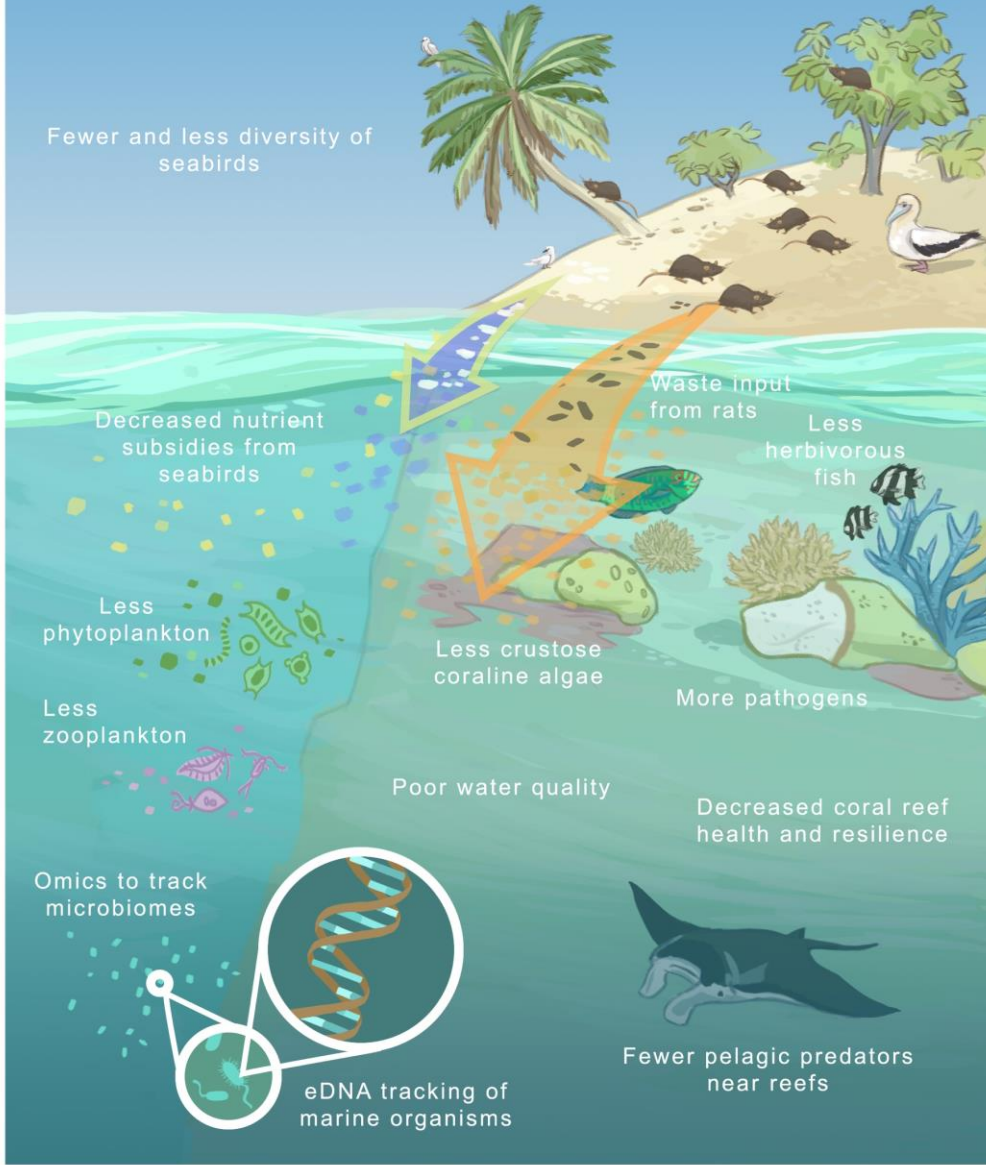
Sanctuary

Resilience



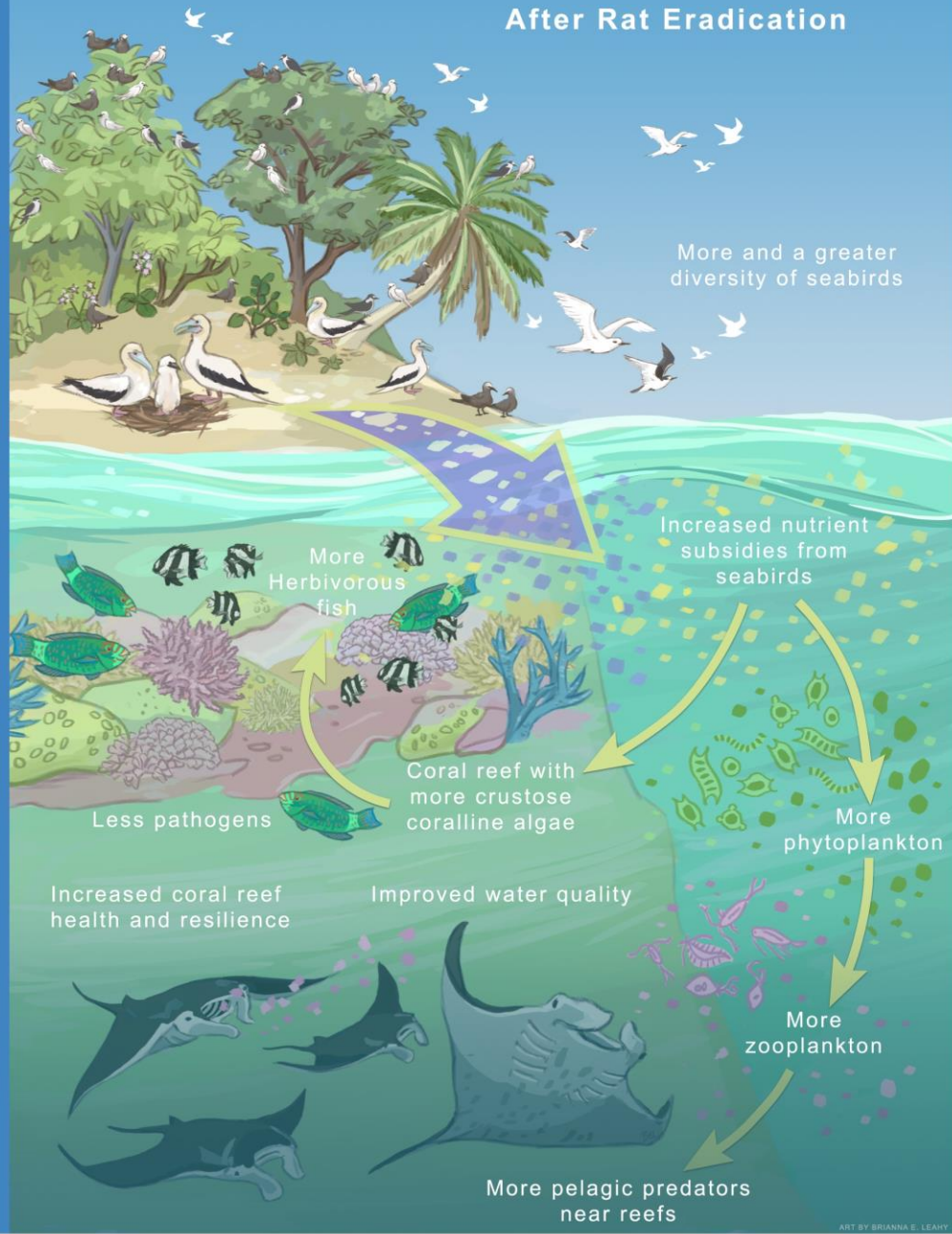
## Before Rat Eradication

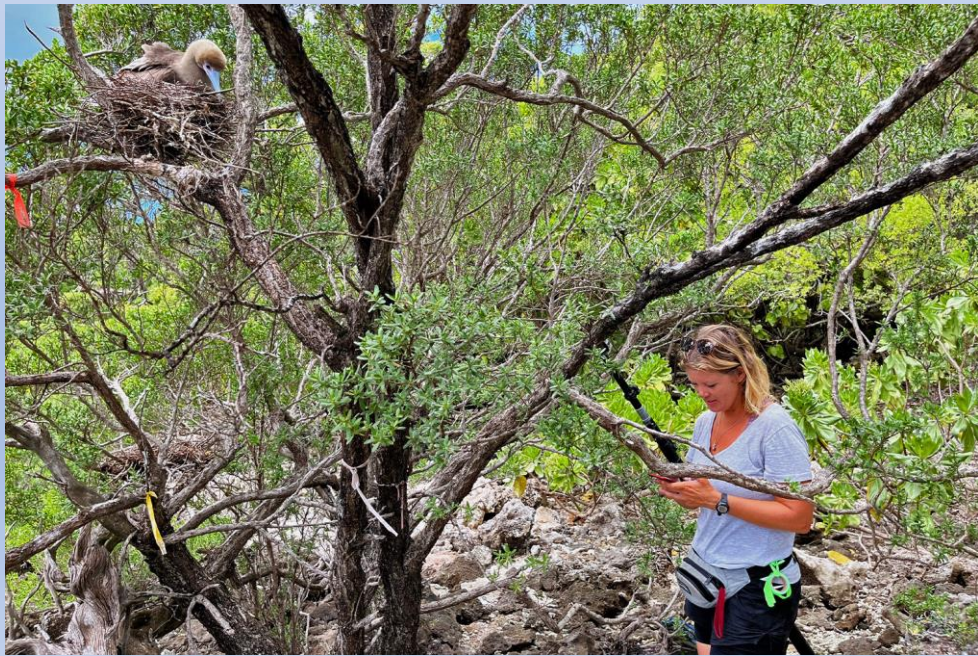
Fewer and less diversity of seabirds



## After Rat Eradication

More and a greater diversity of seabirds





# Community Participation





# Blue Climate Initiative

[www.blueclimateinitiative.org](http://www.blueclimateinitiative.org)

*A healthy and restored climate*

*An understood and protected ocean*

*Resilient, thriving and equitable communities*



## Solutions for People, Ocean, Planet

- *Deep Sea Mining Moratorium*
- *Carbon Sequestration*
- *Wave Energy*